

Greenland Halibut in NAFO Subarea 0: Baffin Bay and Davis Strait

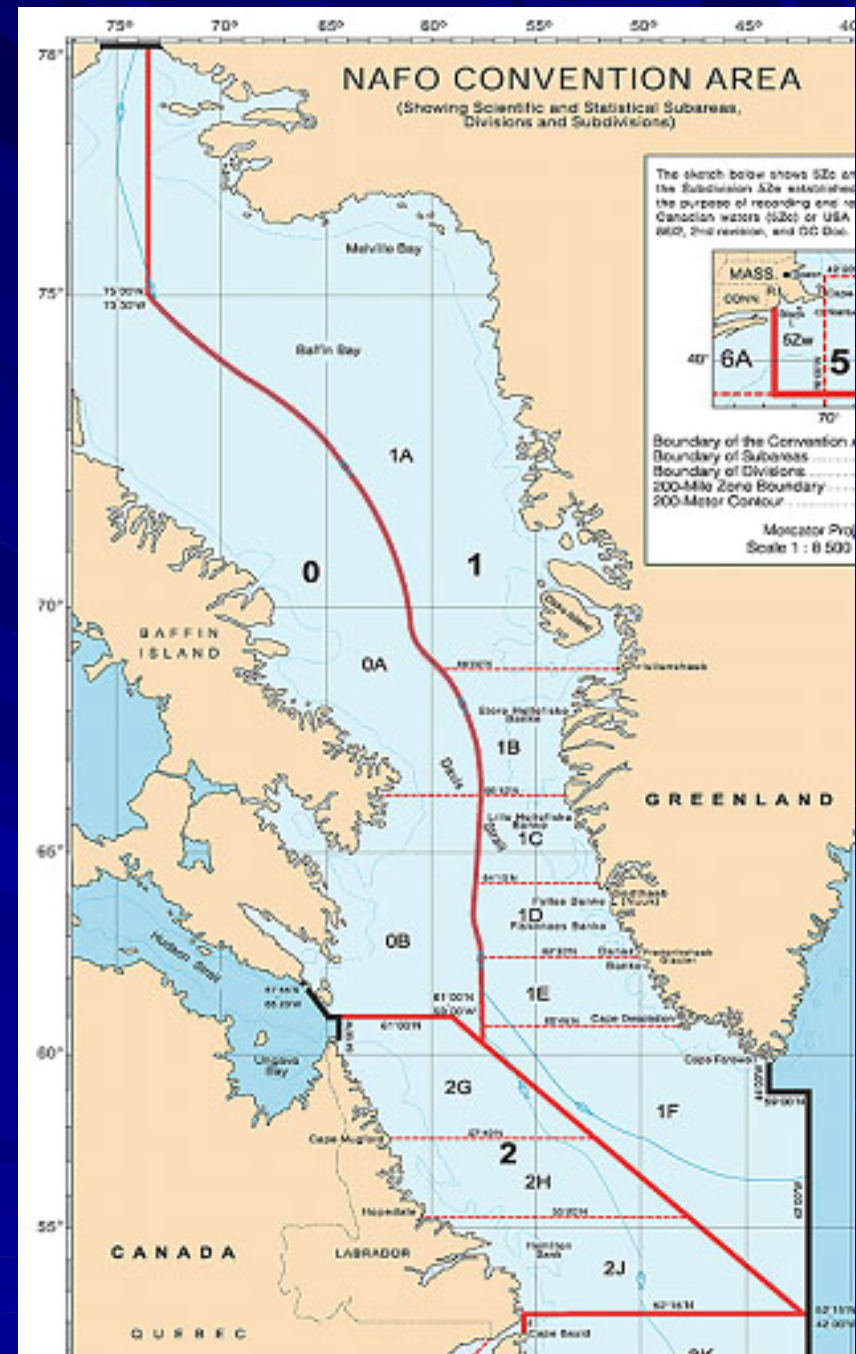
DFO Central & Arctic Presentation to
Fisheries Resource Conservation Council

February 18, 2010

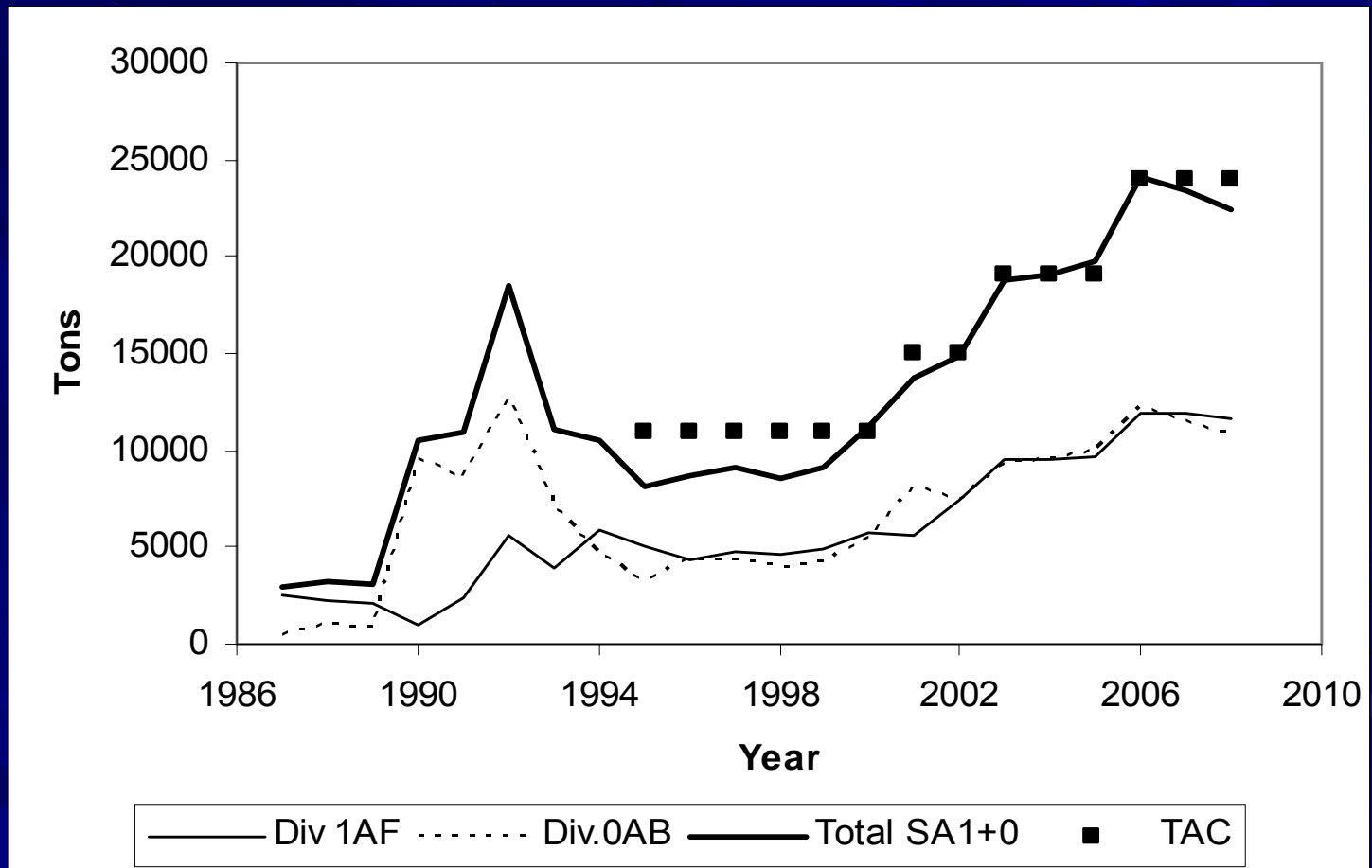
Montreal

NAFO Subarea 0: Baffin Bay and Davis Strait

- Stock shared with Greenland [SA0+1A (offshore) and 1B-F]
- Managed independently by Canada and Greenland
- Both Greenland and Canada seek NAFO Scientific Council advice



History of Fishery



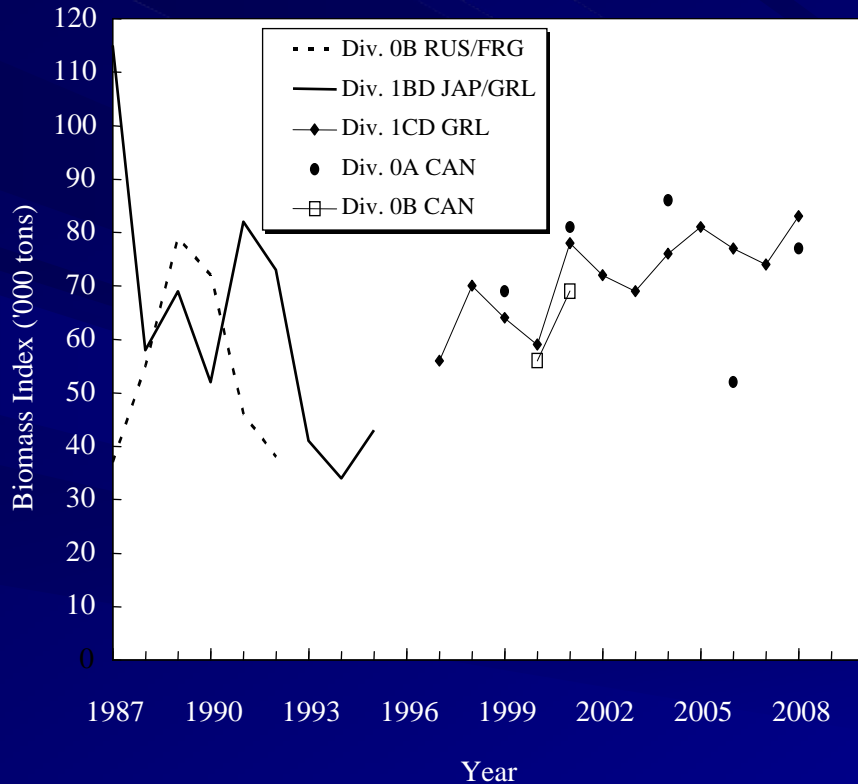
Nunavut 2010 Allocations

	0A	0B	0B CSTMA
Quota (MT)	6500	1500	500
AFA	950	310	
BFC	3800	400	
PFL / CSFL	950	650	500
QC	700	140	
Inshore Exploratory	100		
Total	6500	1500	500

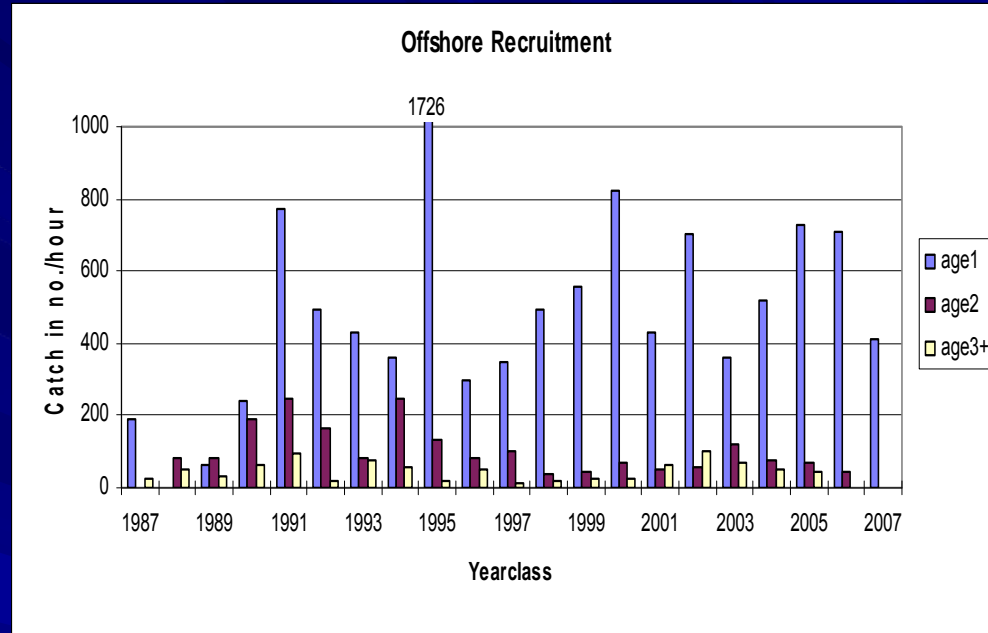
Fishery Structure

- *Gear* - Gill nets, otter trawls, longlines
- 18 commercial licences
- Primarily Enterprise Allocation, with small Fixed Gear Competitive Fishery in 0B
- Offshore fishery with vessels >65'

Stock Status



Biomass estimates from various surveys in SA 0 and 1. Note that the survey in Div. 0A in 2006 had incomplete coverage.



Year-class strength of Greenland halibut of ages 1-3+ in number per hour trawled in the offshore nursery area (Div 1AS-1B, depths 300-600 m).

Economic Importance

Figure I: 0A - Turbot Landings, Landed Value during 2002-2007

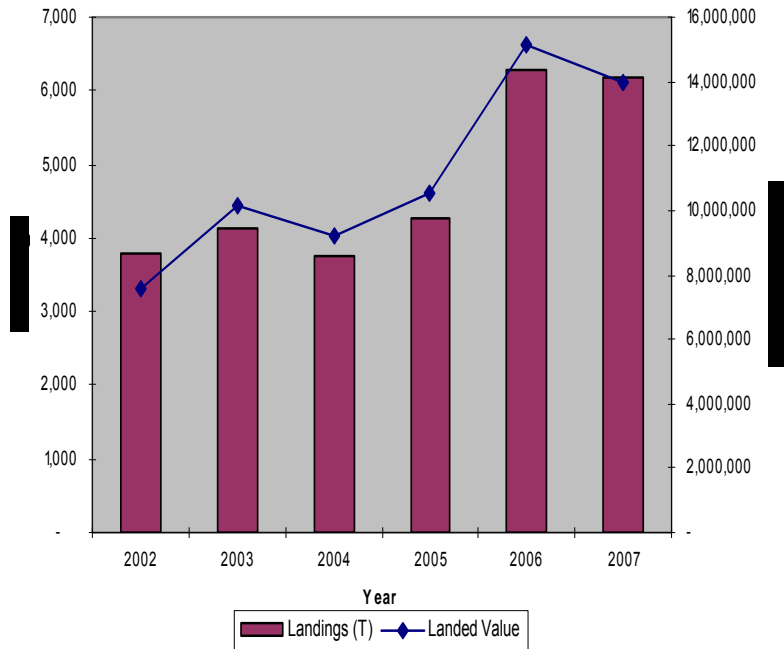
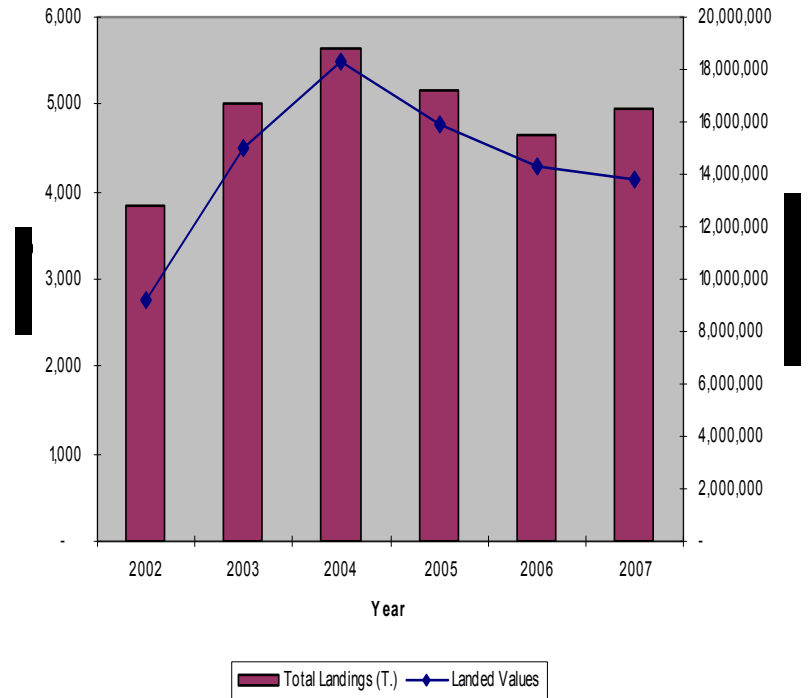


Figure I: 0B - Turbot Landings, Landed Value during 2002-2007



Fishery Co-Management

- Nunavut – Nunavut Land Claims Agreement;
Nunavik – Nunavut Inuit Land Claims Agreement
- Agreements set out harvesting rights and fishery management regimes
- In **Nunavut**, Nunavut Wildlife Management Board is the main instrument of wildlife management
 - makes decisions on fisheries within Nunavut Settlement Area (inshore)
 - makes recommendations on fisheries outside Nunavut Settlement Area (offshore)

Fishery Co-Management

- DFO Minister retains ultimate authority for fisheries decisions both inside and outside of Nunavut Settlement Area
- Government needs to give special consideration to adjacency and economic dependence of communities in Nunavut on marine resources when issuing commercial fishing licences

Fishery Co-Management

- In **Nunavik**, Nunavik Marine Region Wildlife Board is the main instrument of wildlife management in the Nunavik Marine Area
- Has similar role and authority in Nunavik as the Nunavut Wildlife Management Board does in Nunavut
- Upon any increase in Greenland Halibut (Turbot) TAC in NAFO Div. 0B, Nunavik must receive 2.54% of the TAC increase if $\leq 5,500$ MT or 10% of the TAC increase if $> 5,500$ MT

Advisory Committee/Governance

- DFO holds meetings with a stakeholder advisory group comprised of Division 0 allocation holders and fisheries co-management partners in conjunction with IFMP development and renewal
- NWMB *Fisheries Allocation Policy for Nunavut's Commercial Marine Fisheries*
- Policy established expert, independent *Fisheries Allocation Committee (FAC)*

Sustainability Fisheries Framework

- *Checklist and Gap Analysis* - done annually
- *Integrated Fisheries Management Plan* in place
- *Sensitive Benthic Areas Policy* – fishing closure in 0A to protect coldwater coral and Narwhal overwintering area
- *Emerging Fisheries Policy* – assessing potential of inshore Greenland halibut fisheries

Management Challenges

- Frontier, remote area
- Little data
- Abundant marine mammals
- Low productivity
- Developing fishery with minimal infrastructure
- Majority of landings in Greenland