



Gulf of St-Lawrence Groundfish fisheries

Québec Region

Presentation to

Fisheries Resource Conservation Council

Montréal, February 17, 2010

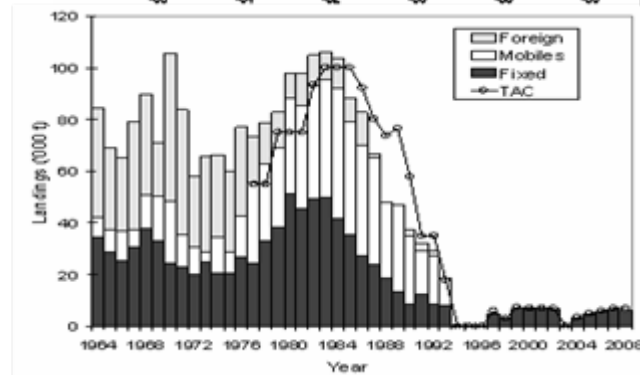
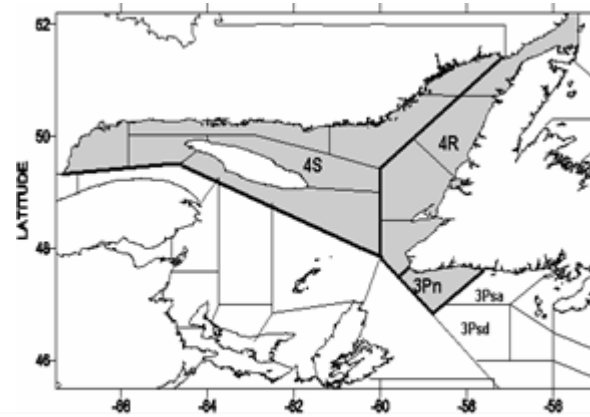


3Pn 4RS Cod



Cod 3Pn4RS (northern Gulf)

- Directed fishery: 7000 t TAC
- Population status: Critical
- Monitoring with DFO research vessel survey & Sentinel mobile and Sentinel fixed gear surveys
- LRP and URP but PA not implemented





Cod 3Pn4RS (northern Gulf) (continued)

- Assessment with ADAPT VPA; RAP Feb 23-24
- Conservation issues: Need to get out of critical zone; Increase in M; Grey seals invading northern Gulf; protection of recruitment
- COSEWIC status: Threatened
- Most recent references: SAR 2009/010; Fréchet et al. (2009) CSAS Res Doc 2009/090

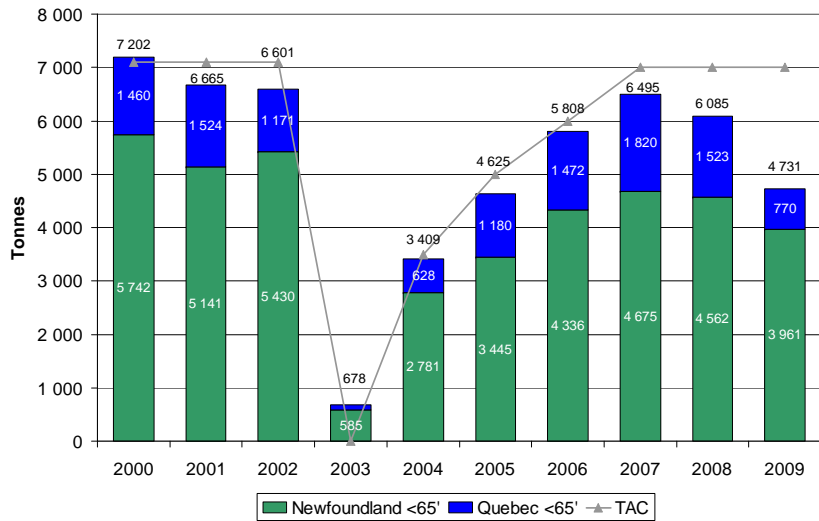


3Pn 4RS Cod - 2009

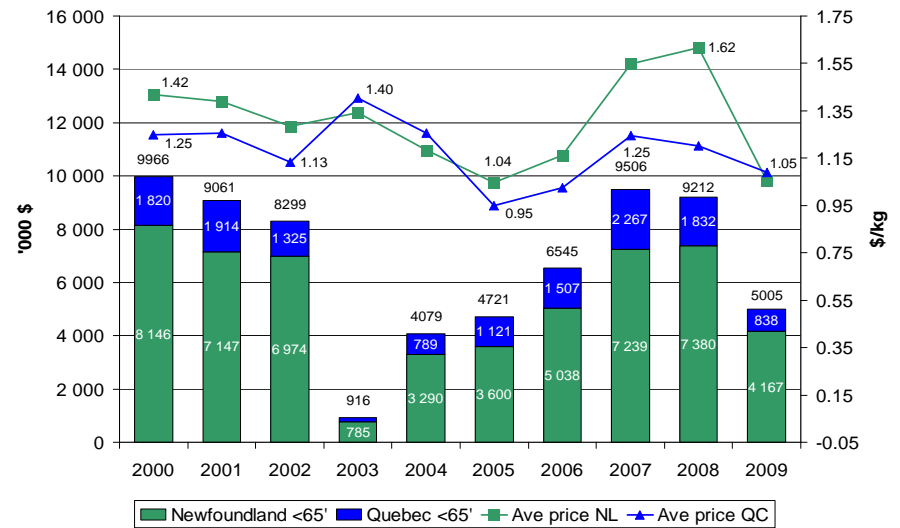
		Total Licences	Active Licences
Québec	Boats <65'	915	179
	Boats 65'-100'	8	0
	Boats >100'	3	0
Newfoundland	Boats <65'	904	720
	Boats 65'-100'	0	0
	Boats >100'	0	0



Volume of 3Pn 4RS Cod Landings



Value of 3Pn 4RS Cod Landings





3Pn 4RS Cod

Commercial TAC Sharing

- Fg < 65' 46.090%
 - Québec 28.000%
 - Nfld 72.000%
- Mg < 45' 0.169%
- Mg 45'-64' 41.315%
- Mg 65'-100' 3.305%
- Danish seiners 1.534%
- Vessels > 100' 7.590%

Fishery Management Regime

- Fg:
 - Regional quotas (also divided by sectors)
 - Competitive fishery
- Mg: Moratorium on mobile gear use (gradual reentry if TAC > 9000t)



3Pn 4RS Cod Management Measures

Protection of fish during the spawning period

- Closure of all groundfish fisheries from April 1st to June 23rd in part of 4R
- Closure of directed Cod harvesting until June 23rd

Fishing periods and quotas

- Limited fishing periods and quotas vary from a fleet to another

Weekly catch limits

- The individual weekly limit varies from a fleet to another (ex. 2268 Kg for LNS)

Combining of licences

- The buddy-up system allows two licence holders to fish on the same boat

Fishing gear

- Gillnets: 6 or 25 nets depending on the area, mesh size from 140 to 152 mm
- Longline: Maximum of 2000 circular hooks with a gape not less than 12.6mm (Maximum of 8000 for Gaspé >45' fleet)
- Handline: Limit of 6 handlines with each having a maximum of 12 single hooks



3Pn 4RS Cod

Control and Monitoring

- **Hail out prior to departure and hail in mandatory**
- **At-sea observer**
5% to 20% observation on board coverage
- **Data collection – logbooks**
All fishers must complete a logbook for all their catches
- **Small fish protocol**
The minimum length of Cod relative to the small fish protocol is 43 cm
- **By-catch protocol**
While directing for Cod, the authorized by-catch is 10% (excepted Atlantic Halibut: 3% in Qc)
- **Dockside monitoring**
Dockside monitoring program applies at 100% in Qc and % varies in NFL
- **Vessel monitoring system and daily hail in**
Mandatory for Gaspé >45' fleet



3Pn 4RS Cod Management and Other Issues

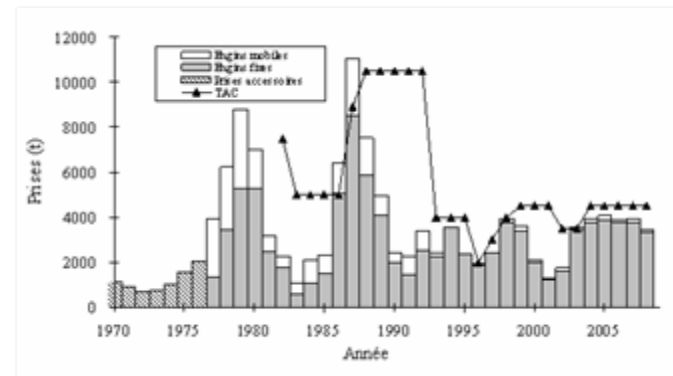
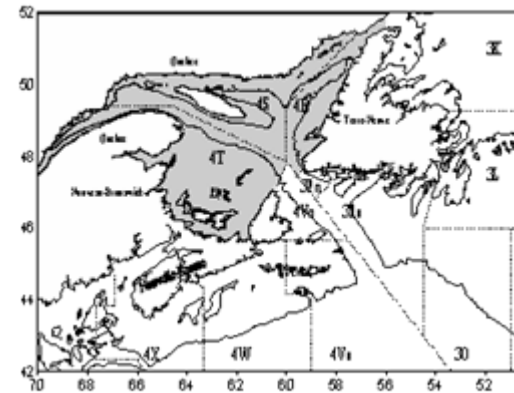
- To finalize and implement the Precautionary Approach for this stock
- To adapt (reduce) the fishing capacity to the low TAC level
- To address poor market conditions



4RST Greenland Halibut

Greenland halibut 4RST (entire Gulf)

- Directed fishery: 4500 t TAC (main groundfish fishery in the Gulf)
- Population status: Healthy but 35% decline in 2009 and recruitment fishery
- Monitoring with DFO research vessel survey & Sentinel mobile survey





Greenland halibut 4RST (cont.)

- LRP and URP but PA not implemented
- Assessment by tracking indices; RAP Feb 22
- Conservation: Recent decline in abundance indices; truncated size distribution (no large fish) & decline in size at maturity
- COSEWIC status: Not assessed
- SAR 2009/020

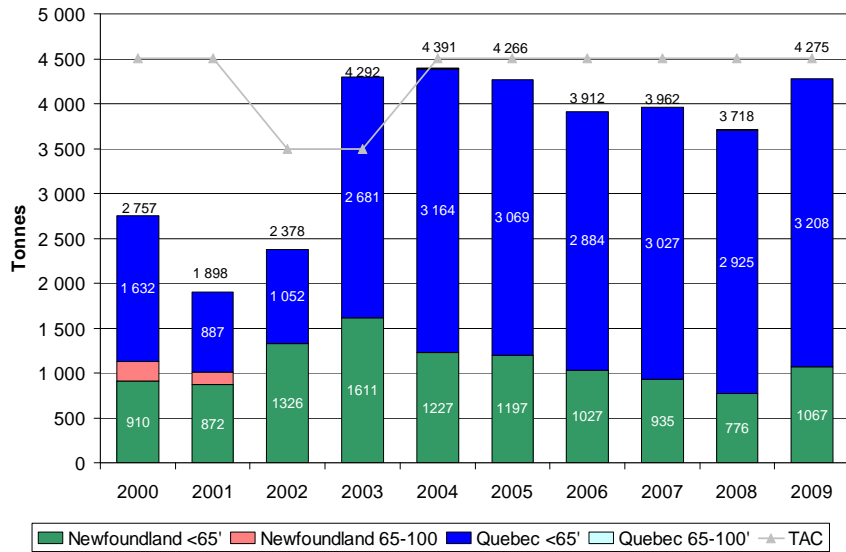


4RST Greenland Halibut - 2009

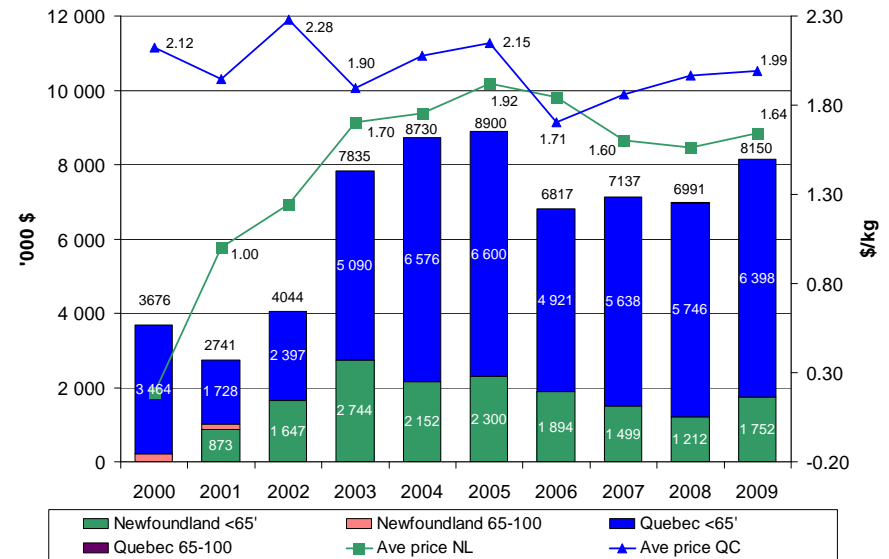
		Total Licences	Active Licences
Québec	Boats <65'	915	220
	Boats 65'-100'	8	2
	Boats >100'	3	0
Newfoundland	Boats <65'	904	128
	Boats 65'-100'	0	0
	Boats >100'	0	0



Volume of 4RST Greenland Halibut Landings



Value of 4RST Greenland Halibut Landings





4RST Greenland Halibut

Commercial TAC Sharing

- Fg < 65' 76.200%
 - QC 82.000%
 - W-NL 18.000%
- Mg < 65' 14.267%
- Mg 65' – 100' 8.600%
- Vessels > 100' 0.933%

Fishery Management Regime

- Fg:
 - Regional quotas (also divided by sectors)
 - Competitive fishery or ITQ
- Mg: Moratorium on directed fishery since 1993



4RST Greenland Halibut Management Measures

- **Protection of Cod spawning period and concentrations**
 - Closure of the fishery from April 1st to June 23rd in part of 4R
 - Permanent closure of directed fishery in a part of 4T south of Cap Gaspé
- **Fishing gear**

Gillnets: 90 or 120 nets depending on the area, minimum mesh size of 152 mm
- **Fishing periods and quotas**

Limited fishing periods and quotas vary from one fleet to another
- **Combining of licences**

The buddy-up system allows two licence holders to fish on the same boat



4RST Greenland Halibut Control and Monitoring

Hail out prior to departure and hail in

- Mandatory in general

At-sea observer

- 5% observation on board coverage

Data collection – logbooks

- All fishers must complete a logbook for all their catches

Small fish protocol

- The minimum length of Greenland Halibut relative to the small fish protocol is 44 cm

By-catch protocol

- The authorized by-catches are 10% (excepted Atlantic Halibut: 3% in Qc)

Dockside monitoring

- The dockside monitoring program applies at 100% in Qc and the % varies in Nfld

Daily hail in

- Mandatory for Gaspé competitive fleet and Nfld



4RST Greenland Halibut Management and Other Issues

- To implement quota reconciliation to deal with fleets that exceed their allocation
- To adapt (reduce) fishing effort to available quotas
- To adapt (reduce) fishing capacity to the TAC level
- To finalize and implement the Precautionary Approach for this stock
- The potential re-entry of the mobile gear fleets remains strongly contentious

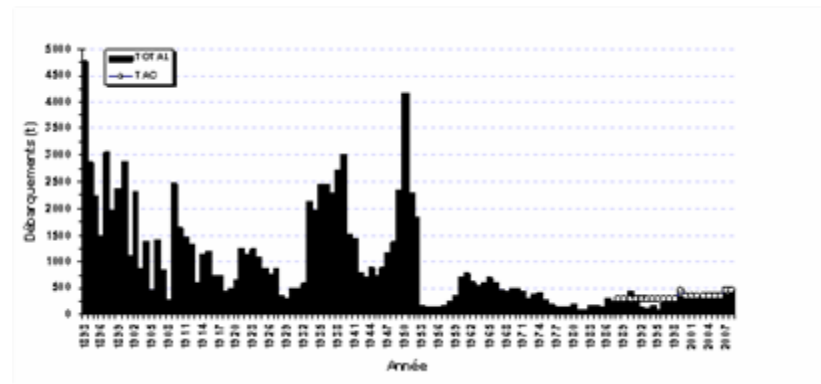
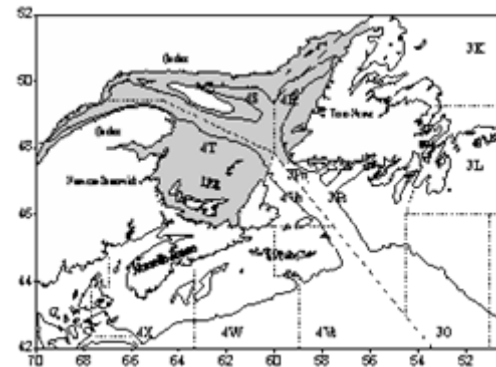


4RST Atlantic Halibut



Atlantic halibut 4RST (entire Gulf)

- Directed fishery: 475 t TAC
- Population status:
Cautious; rebuilding
- Monitoring with DFO
research vessel survey &
Sentinel mobile survey





Atlantic halibut 4RST (cont.)

- No PA framework
- Assessment by tracking indices; RAP Feb 2011
- Conservation issues: By-catch in Greenland halibut Lump and Cod fisheries
- COSEWIC status: Under review
- SAR 2009/023



4RST Atlantic Halibut - 2009

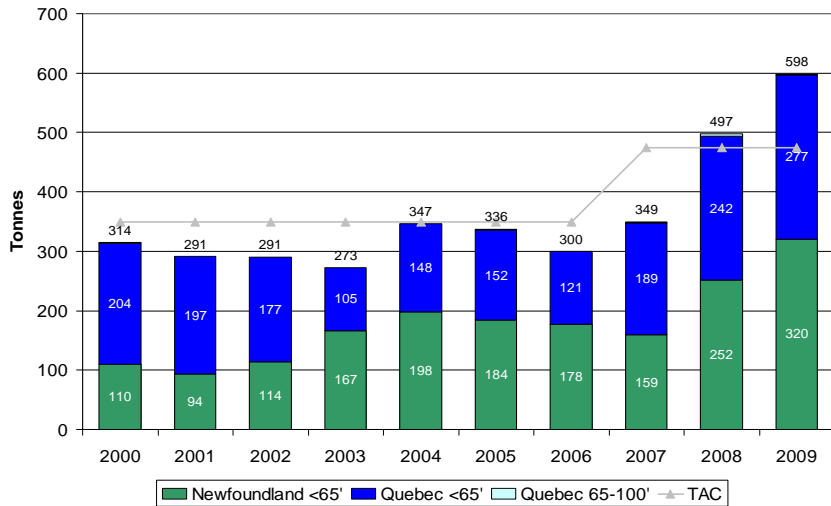
(Data from Gulf and Maritimes Regions not available at this time)

		Total Licences	Active Licences
Québec	Boats <65'	915	325
	Boats 65'-100'	8	4
	Boats >100'	3	0
Newfoundland	Boats <65'	904	72
	Boats 65'-100'	0	0
	Boats >100'	0	0



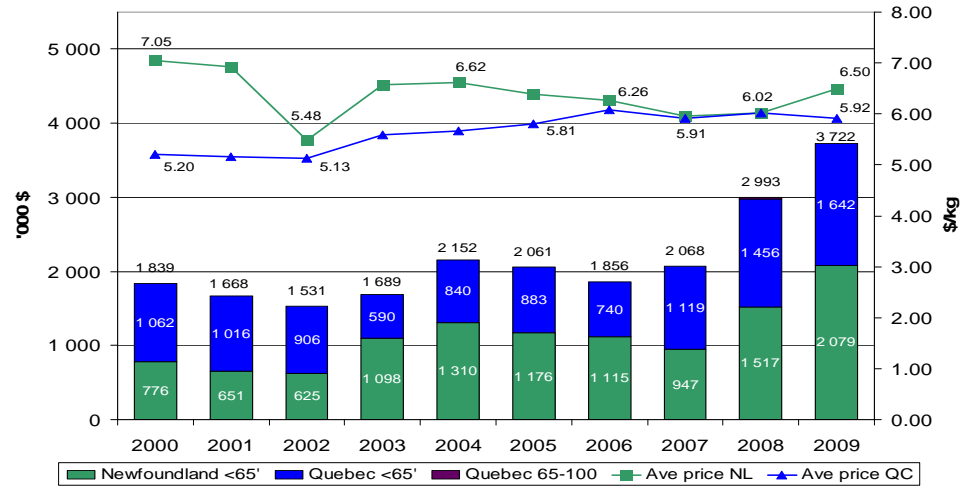
Volume of 4RST Atlantic Halibut Landings

(Data from Gulf and Maritimes Regions not available at this time)



Value of 4RST Atlantic Halibut Landings

(Data from Gulf and Maritimes Regions not available at this time)





4RST Atlantic Halibut

Commercial TAC Sharing

• Fg < 65'	69.714%
ENB	5.170%
GNS	2.010%
PEI	1.460%
Western NFLD	32.030%
Québec N. Shore	8.240%
Gaspé	44.030%
Magdalen Islands	5.440%
Scotia Fundy	1.630%
• Mg < 65	11.714%
• Fg 65' -100'	3.429%
• Mg 65' – 100'	3.429%
• Vessels > 100'	11.714%

Fishery Management Regime

- Fg fleet < 65':
 - geographical fleet shares since 2007
 - competitive fishery
- MG fleet: Bycatch quotas
 - no directed fishery
 - (2008 and 2009: transfer of 108 t to Fg fleet < 65')



4RST Atlantic Halibut Management Measures

- **Protection of Cod spawning period and juveniles**
Closure of the fishery from April 1st to June 23rd in part of 4R
- **Partial annual closure of Shediac Valley (4T5)**
Permanent annual closure of a part of the Miscou bank
- **Fishing gear**
Longline: Maximum number of hooks varies from one fleet to another; gape not less than 15,4mm
- **Fishing periods and quotas**
Limited fishing periods (no more than a few days) and quotas vary from one fleet to another



4RST Atlantic Halibut Control and Monitoring

- **Hail out prior to departure and hail in**
Mandatory
- **At-sea observer**
10% to 30% observation on board coverage
- **Data collection – logbooks**
All fishers must complete a logbook for all their catches
- **Small fish protocol**
The minimum length of Atlantic Halibut is 81 cm.
- **All Atlantic Halibut < 81 cm** must be released in all fisheries
- **By-catch protocol**
The authorized by-catches vary from 3% to 30% from one species to another
- **Dockside monitoring**
Dockside monitoring program applies at 100% in Qc (% varies in NFL)
- **Vessel monitoring system**
Mandatory for Gaspé >45' fleet
- **Daily hail in**
Mandatory for Gaspé >45' and NFL fleets



4RST Atlantic Halibut Management and Other Issues

- To implement quota reconciliation to deal with fleets that exceed their allocation
- To adapt (reduce) fishing effort to available quotas
- To adapt (reduce) fishing capacity to the TAC level
- To develop and implement the Precautionary Approach for this stock
- To reduce and account for by-catches of Atlantic Halibut in other groundfish fisheries (Greenland Halibut and Cod)
- To introduce management measures reconciling conservation objectives and socio-economic concerns

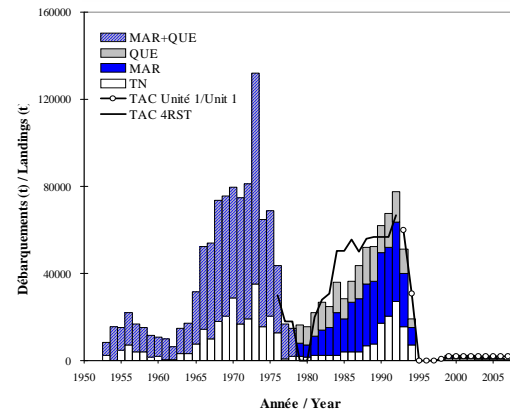
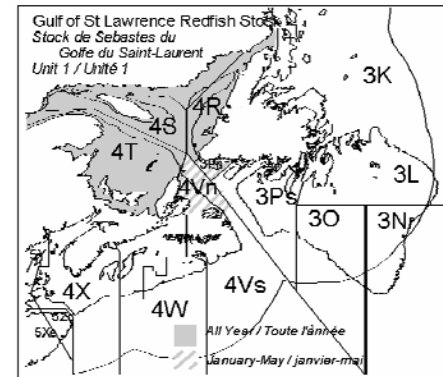


Redfish Unit 1



Redfish Unit 1 (entire Gulf + 3Pn&4Vn in winter)

- Moratorium since 1995 but Index fishery with 2000 t TAC
- Population status: Critical
- Monitoring with DFO research vessel survey & Sentinel mobile survey





Redfish Unit 1 (cont.)

- No PA framework
- Assessment by tracking indices;
- ZAP Feb 25-26: First attempt to pool Units 1+2 and manage separately *Sebastes fasciatus* and *S. mentella*
- Conservation issues: Need to get out of critical zone
- COSEWIC status: Under review
- SAR 2008/026



Redfish Unit 1 - 2009

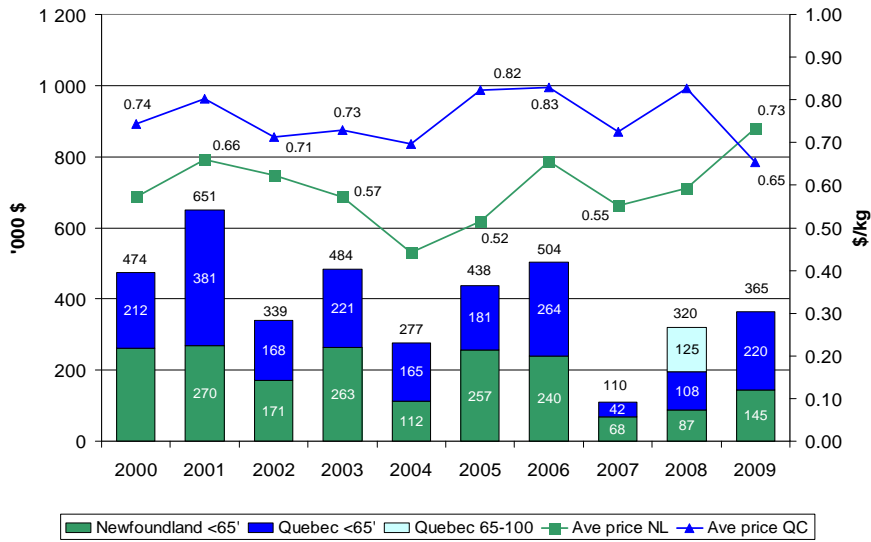
(Data from Gulf and Maritimes Regions not available at this time)

		Total Licences	Active Licences
Québec	Boats <65'	915	98 (86 bycatch Fg)
	Boats 65'-100'	8	0
	Boats >100'	3	0
Newfoundland	Boats <65'	904	2
	Boats 65'-100'	0	0
	Boats >100'	0	0



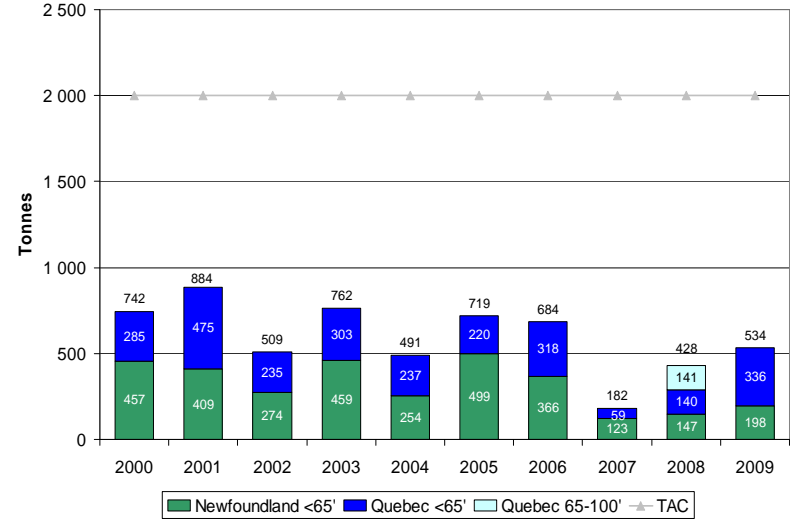
Value of Redfish Unit 1 Landings

(Data from Gulf and Maritimes Regions not available at this time)



Volume of Redfish Unit 1 Landings

(Data from Gulf and Maritimes Regions not available at this time)





Redfish Unit 1

Commercial TAC Sharing

- Fg < 65' 0.750%
- Mg < 65' 14.840%
- Mg 65' – 100' 5.720%
- Vessels > 100' 78.700%

Fishery Management Regime

- Moratorium since 1995
- 2000t Index Fishery since 2000



Redfish Unit 1

Management Measures

Protection of fish during the spawning period

- Closure of directed Redfish harvesting until June 15rd
- Closure of the fishery until June 23rd in a part of 4R to protect Cod spawning

Fishing gear

- Mobile gears: Minimum mesh size of 90 mm in the codend

Quota

- Moratorium with a 2000-ton Index Fishery

Fishing period

- June 15rd to October 31st

Fishing effort

- Limited number of fish harvesters

Fishing area

- In 4RST between 59° and 65° longitude west in depth > 100 fathoms
- No authorized activity in 3Pn and 4Vn



Redfish Unit 1

Control and Monitoring

Hail out prior to departure and hail in

- Mandatory

At-sea observer

- 25% observation on board coverage

Data collection – logbooks

- All fish harvesters must complete a logbook for all their catches

Small fish protocol

- The minimum length of Redfish relative to the small fish protocol is 22 cm

By-catch protocol

- The authorized by-catches vary from 5% to 15%

Dockside monitoring

- The dockside monitoring program applies at 100%



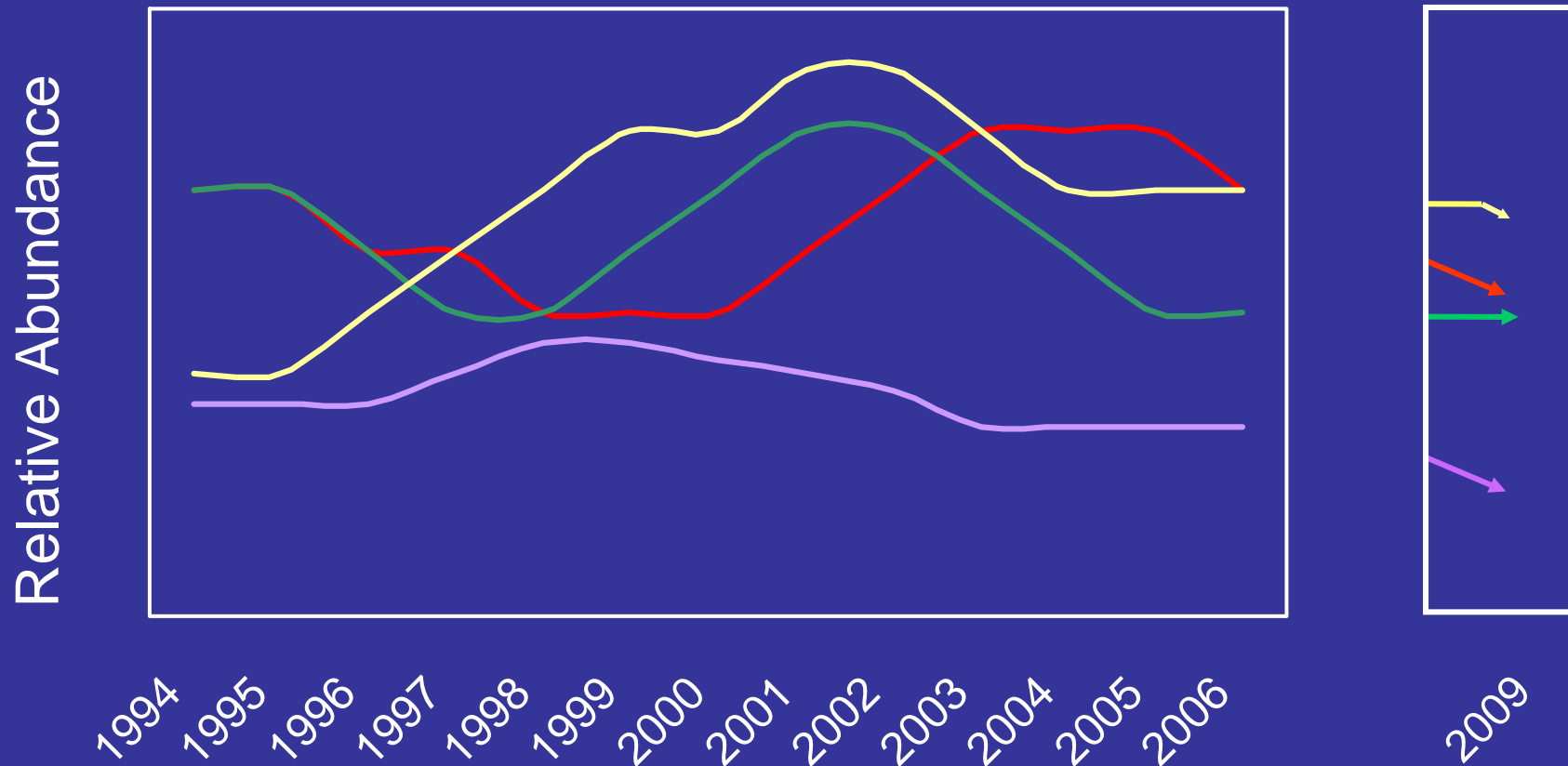
Redfish Unit 1

Management and Other Issues

- To assess Units 1 and 2 as a single area
- To assess the two Redfish species separately
- To review the management measures of both Units including access and allocations
- To review the Index Fishery in the context of the upcoming assessment

Gulf of St-Lawrence Allocations' Trends

— Crab 12 — Inshore Crab — Shrimp — Groundfish
(Québec)





http://www.dfo-mpo.gc.ca/csas/Csas/status/2007/SAR-AS2007_016_E.pdf - Windows Internet Explorer

http://www.dfo-mpo.gc.ca/csas/Csas/status/2007/SAR-AS2007_016_E.pdf

Fichier Edition Atteindre Favoris ?

http://www.dfo-mpo.gc.ca/csas/Csas/status/2007/S...

Rechercher

Quebec, Gulf, and Newfoundland and
Labrador Regions

Canadian Science Advisory Secretariat
Science Advisory Report 2007/016

ECOLOGICALLY AND BIOLOGICALLY SIGNIFICANT AREAS (EBSA) IN THE ESTUARY AND GULF OF ST. LAWRENCE: IDENTIFICATION AND CHARACTERIZATION

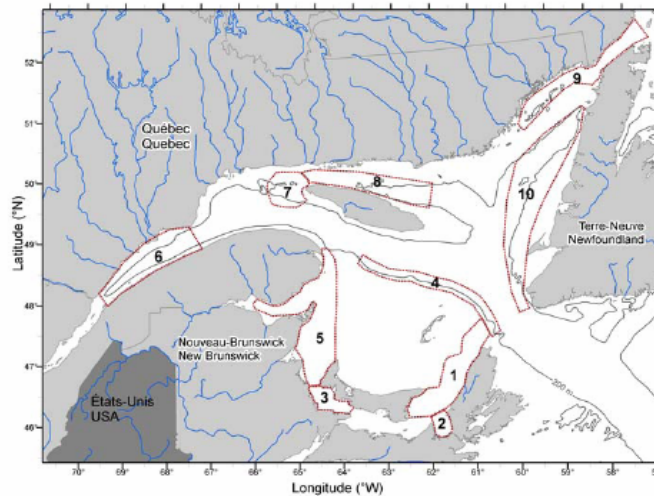


Figure 1. EBSA distribution in the Estuary and Gulf of St. Lawrence: EBSA (1) western Cape Breton, (2) St. George's Bay, (3) Northumberland Strait, (4) the southern fringe of the Laurentian Channel, (5) the southwestern coast of the Gulf, (6) the lower estuary, (7) western Anticosti Island, (8) northern Anticosti Island, (9) the Strait of Belle Isle, (10) the west coast of Newfoundland.

Terminé

Zone inconnue

démarrer

Microsoft Of... Presentation C... Résultats de la r... 2 Internet Exp... FR

14:19



Conclusion

- Biomass indices of the main stocks (Cod, Redfish) at the lowest (or close to the lowest) historical level
- No alternate fisheries
- Need to adapt remaining fishing capacity to available quotas or to long term P.A. objectives
- Fleets restructuring necessary
- No financial aid program from the federal government available
- Need for Species-at-Risk and ecosystemic considerations within fishing plans